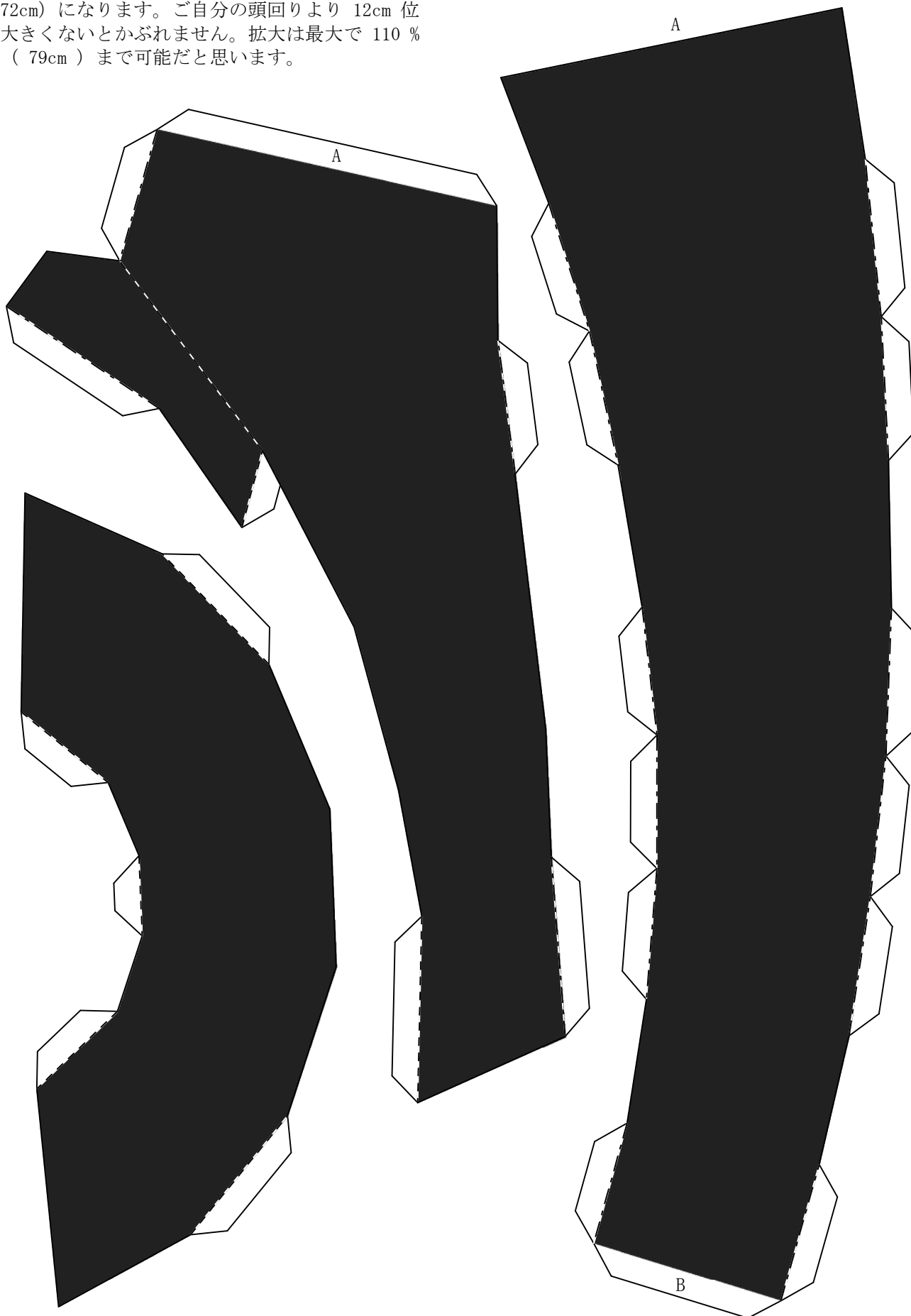
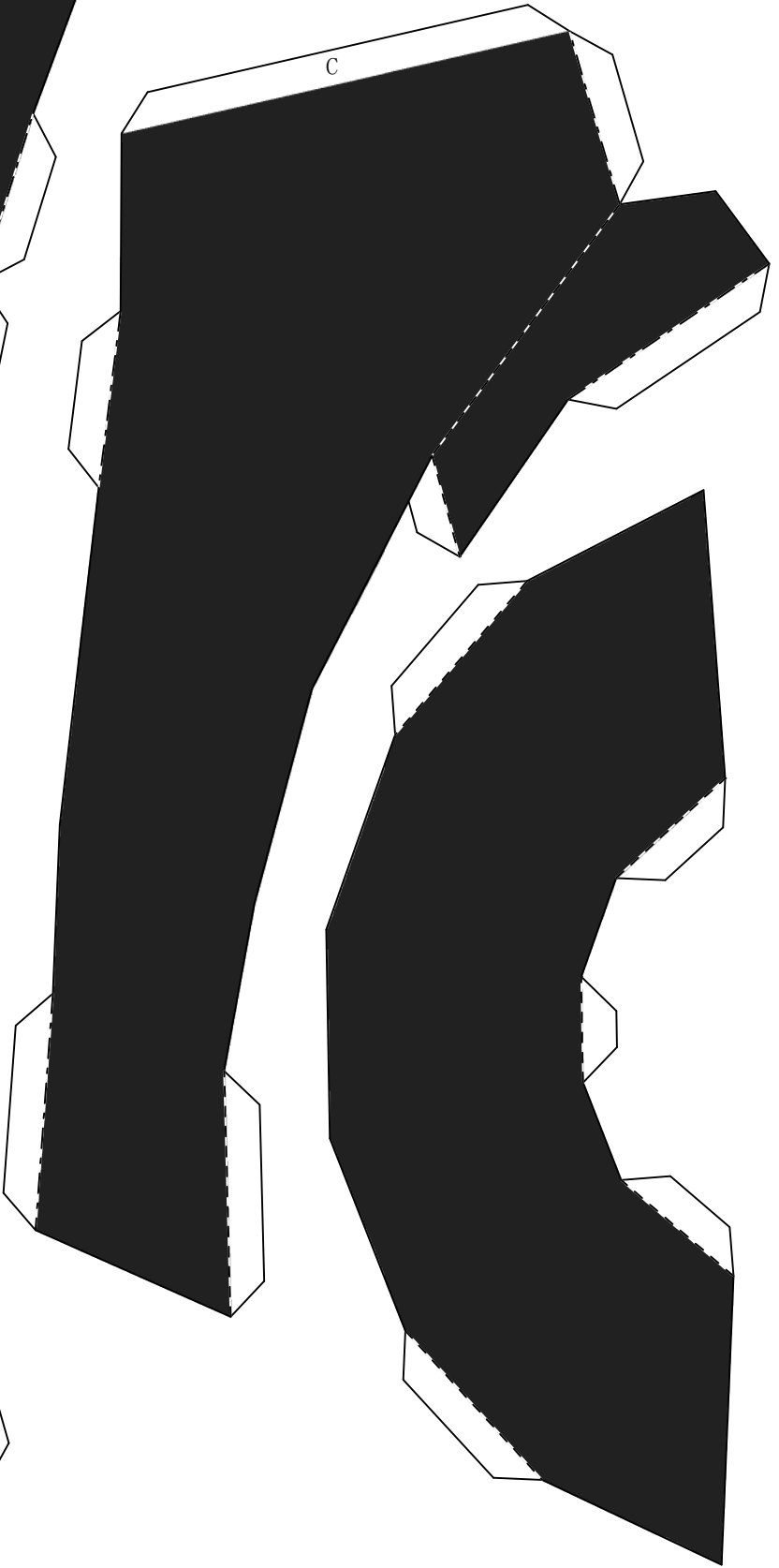
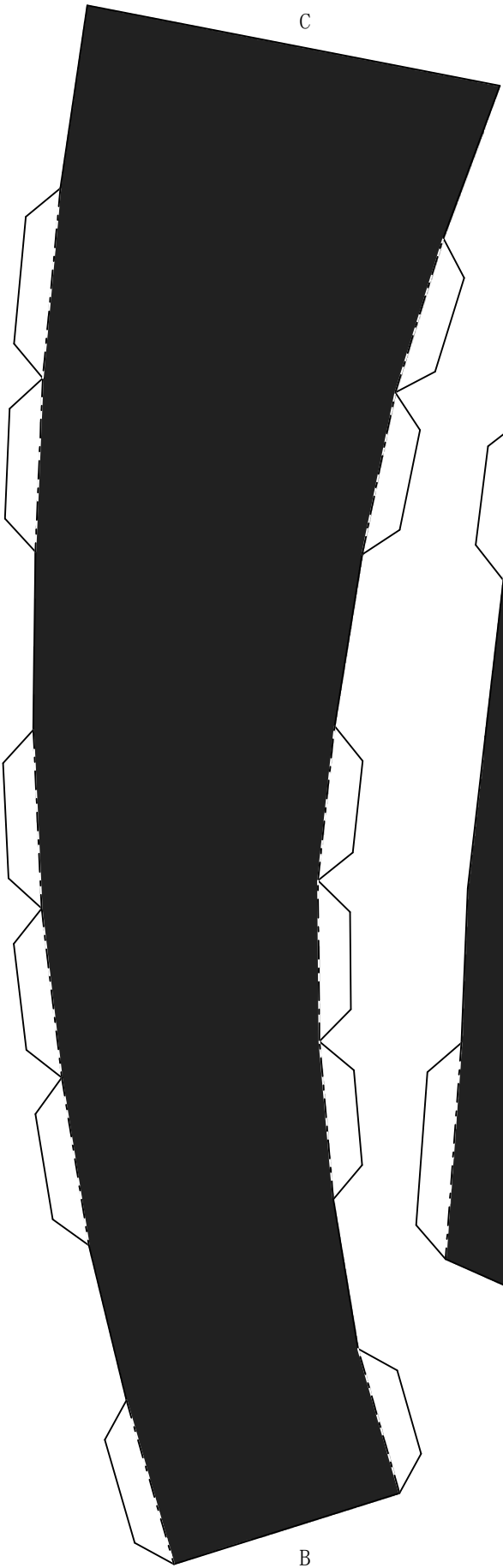
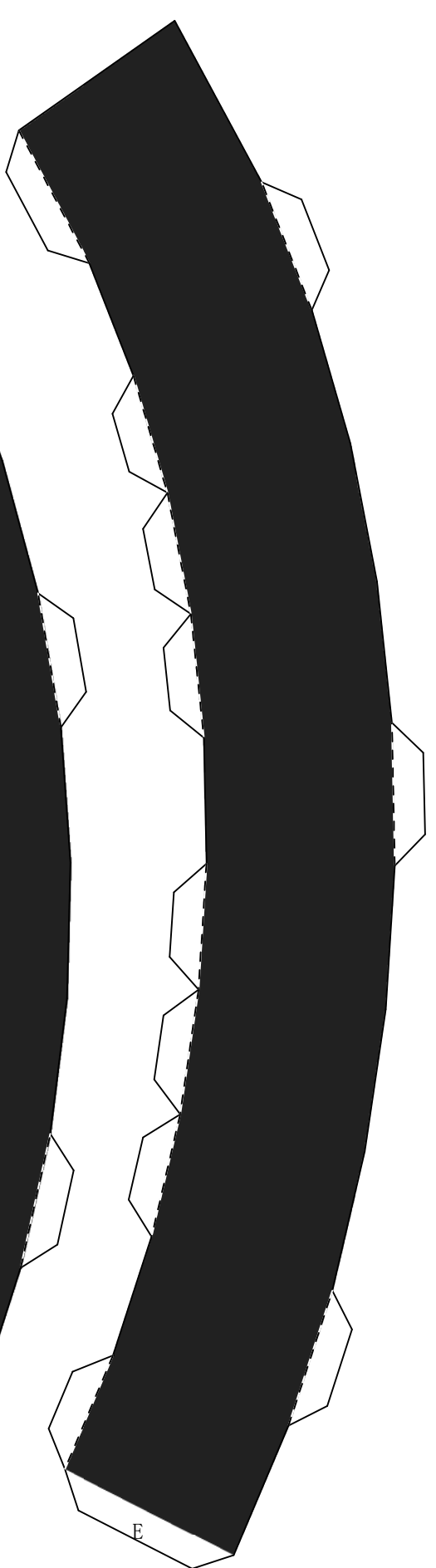
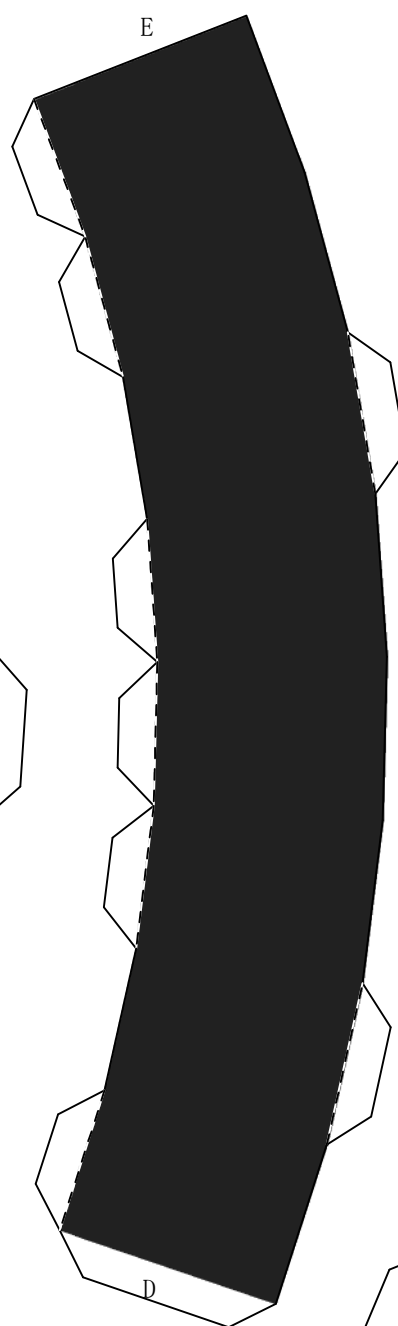
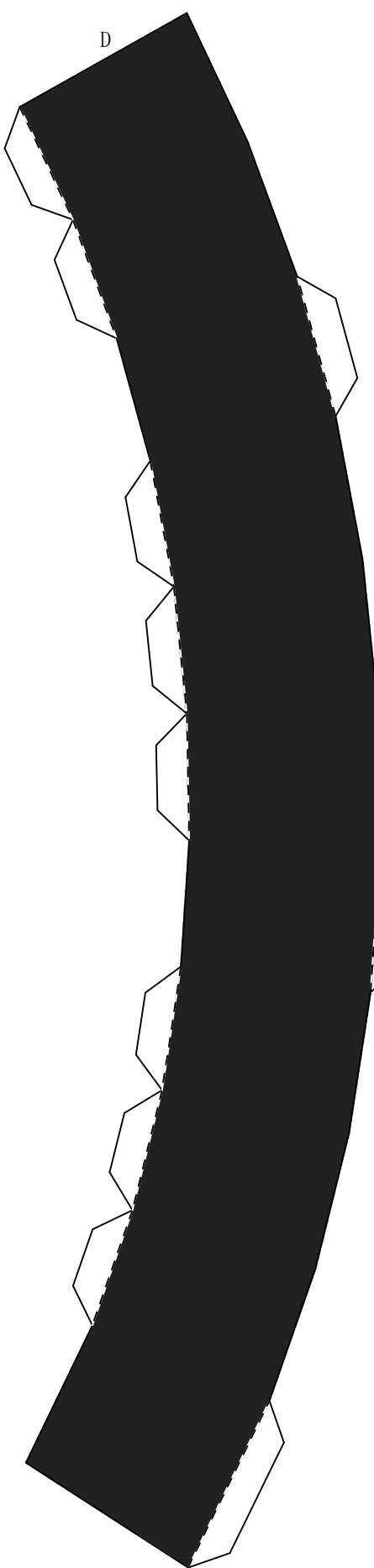


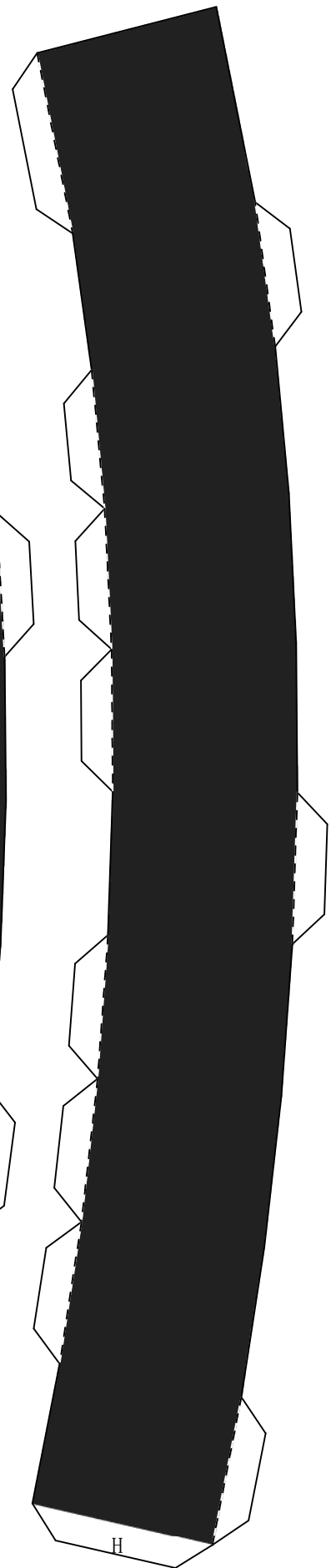
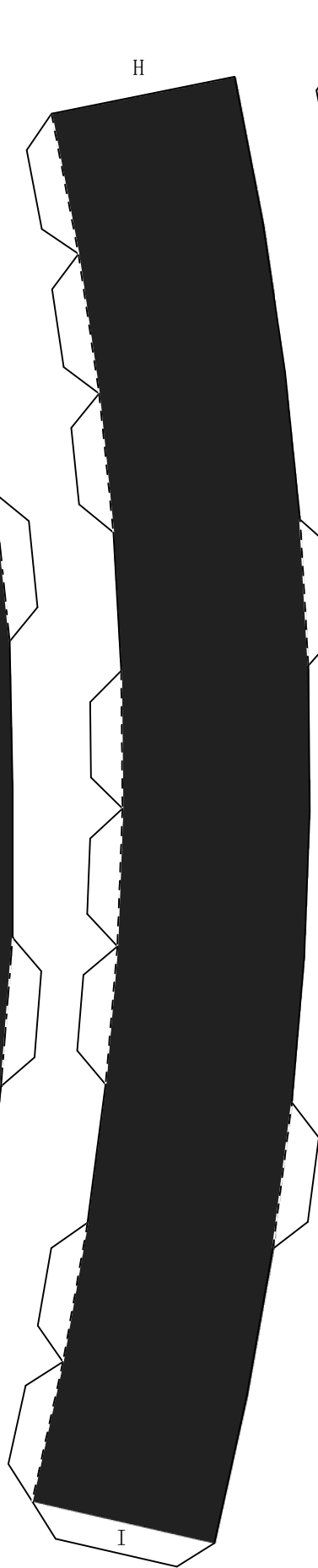
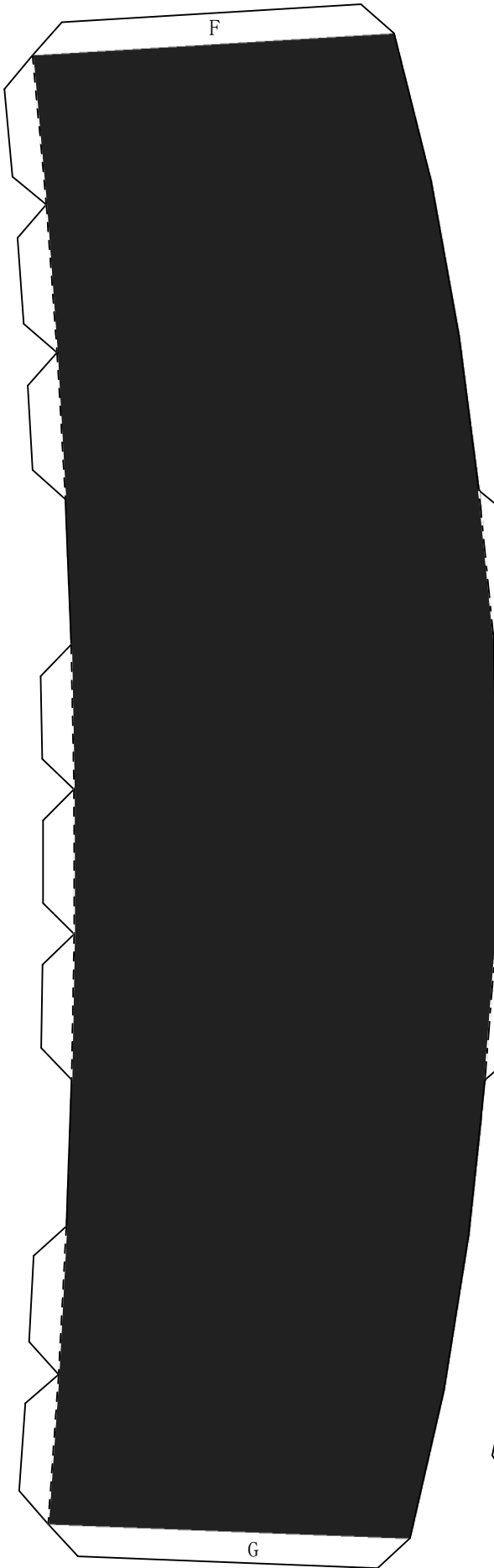
# ダースベイダー 2風

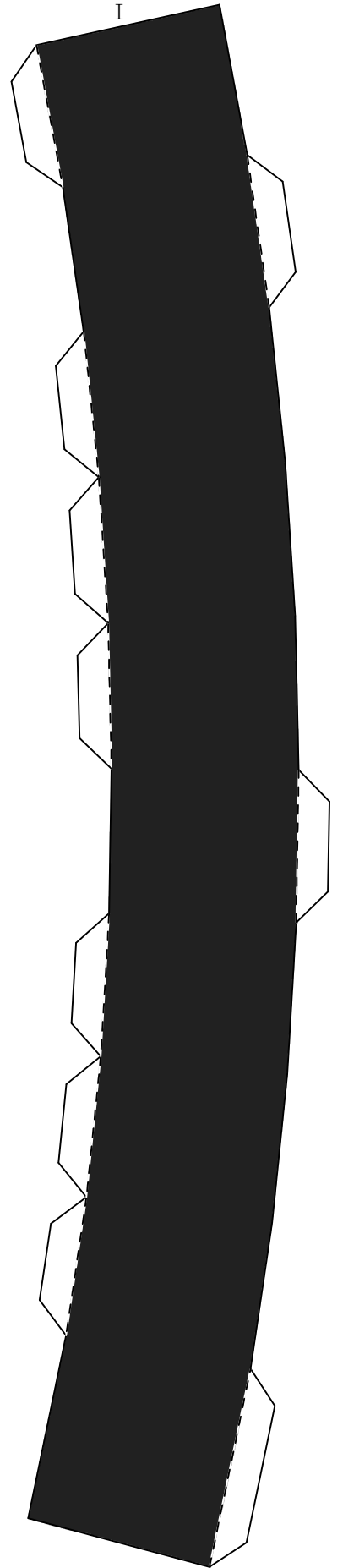
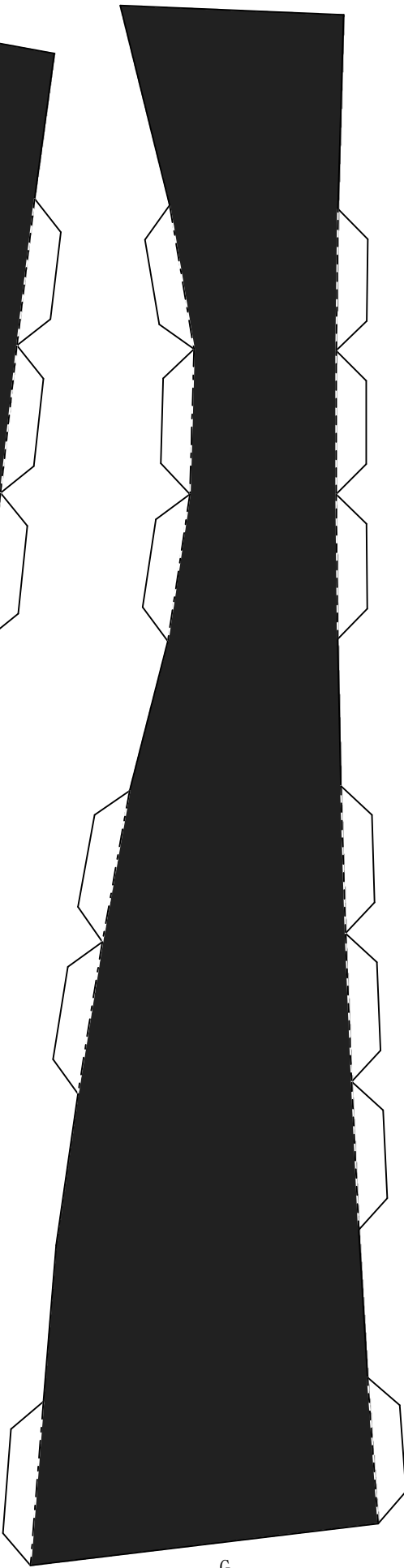
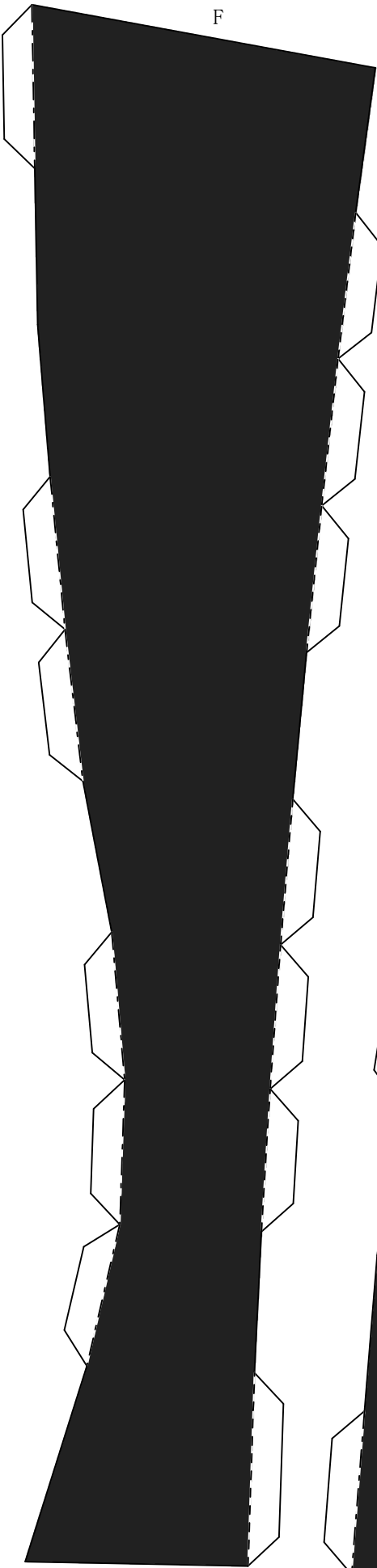
このまま 100 % でプリントして Mサイズ (頭回り 72cm) になります。ご自分の頭回りより 12cm 位大きくないとかぶれません。拡大は最大で 110 % ( 79cm ) まで可能だと思います。

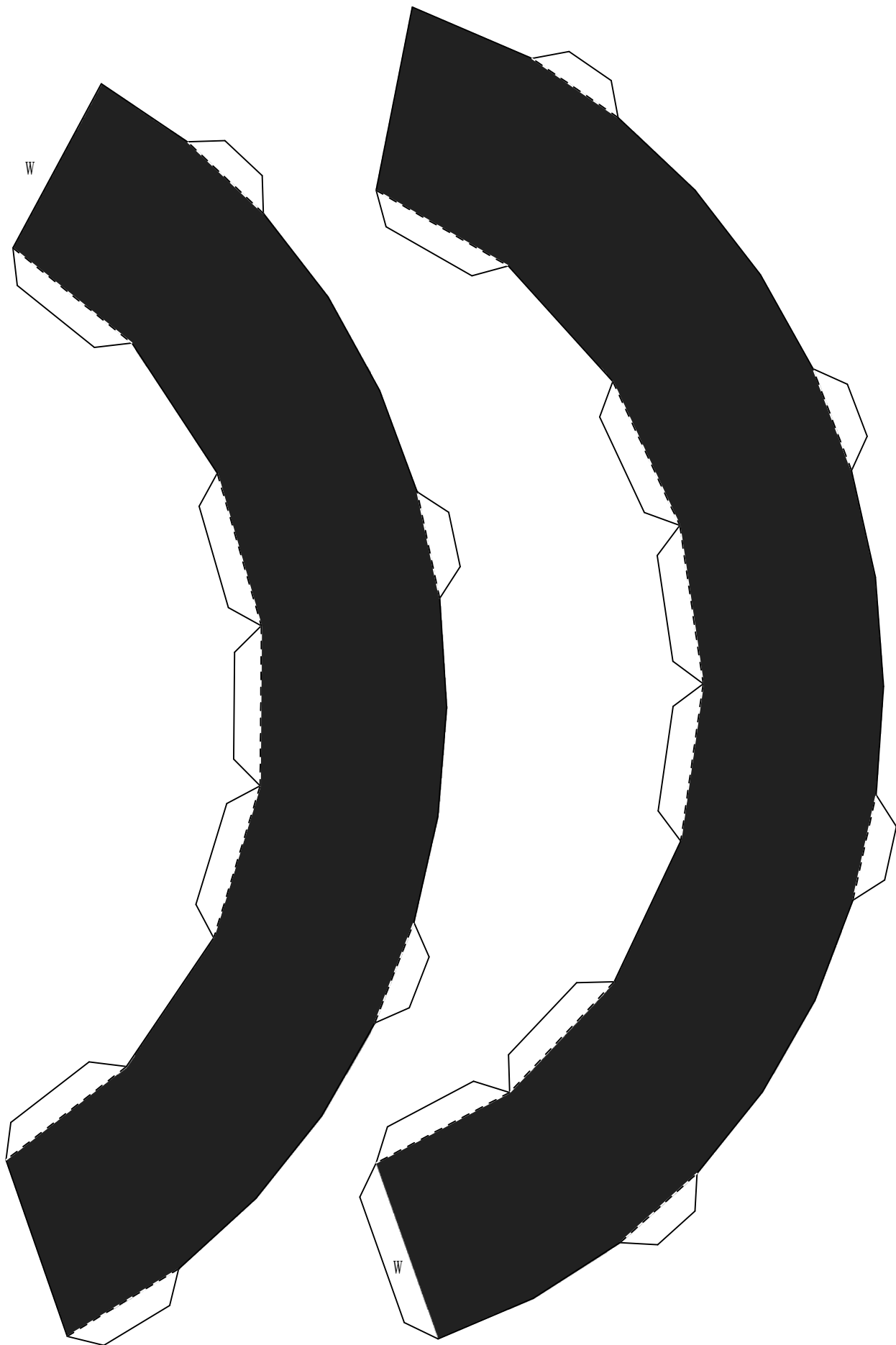


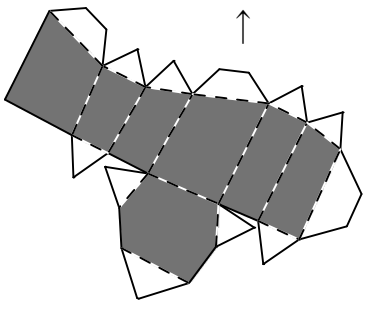
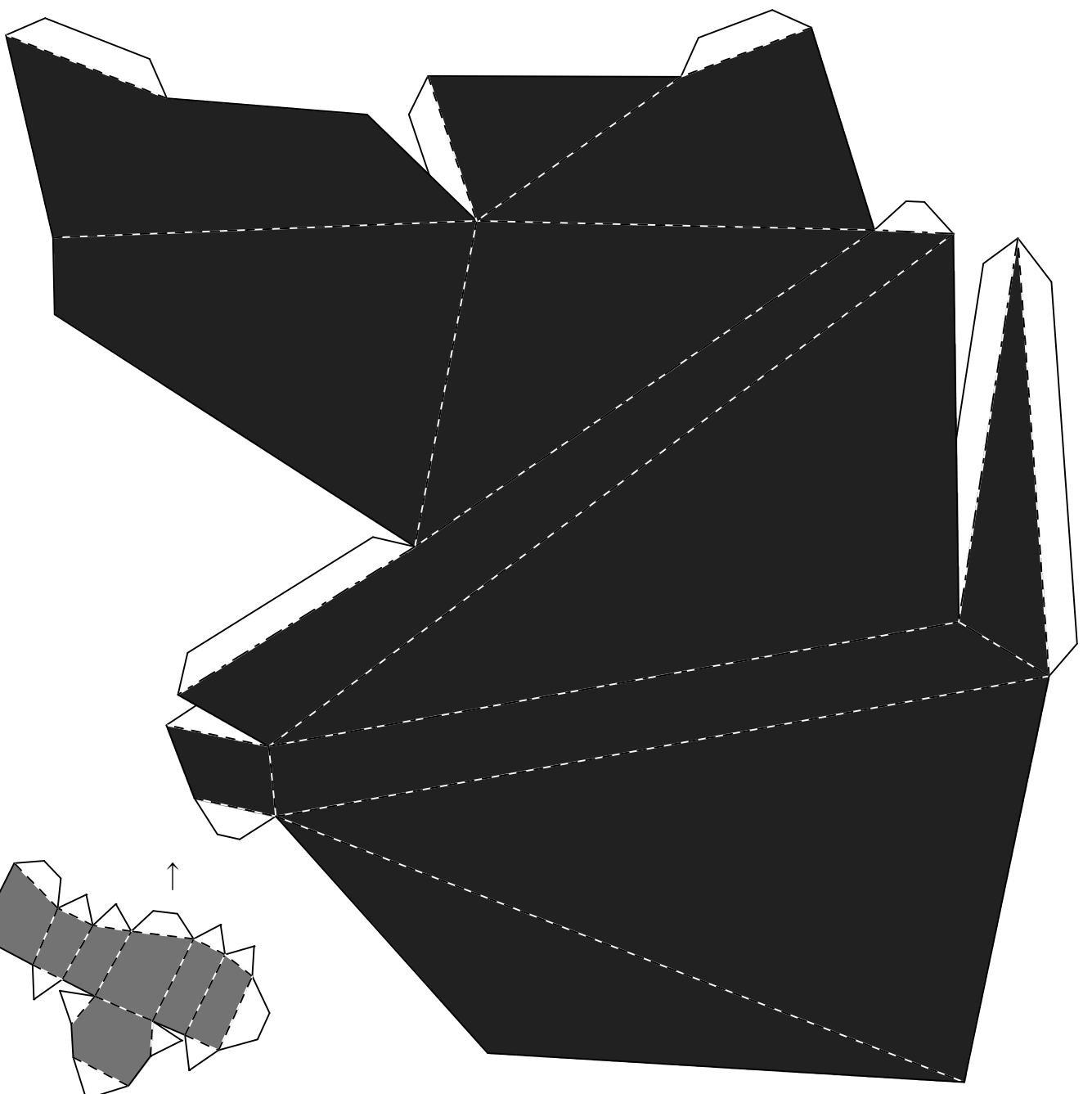
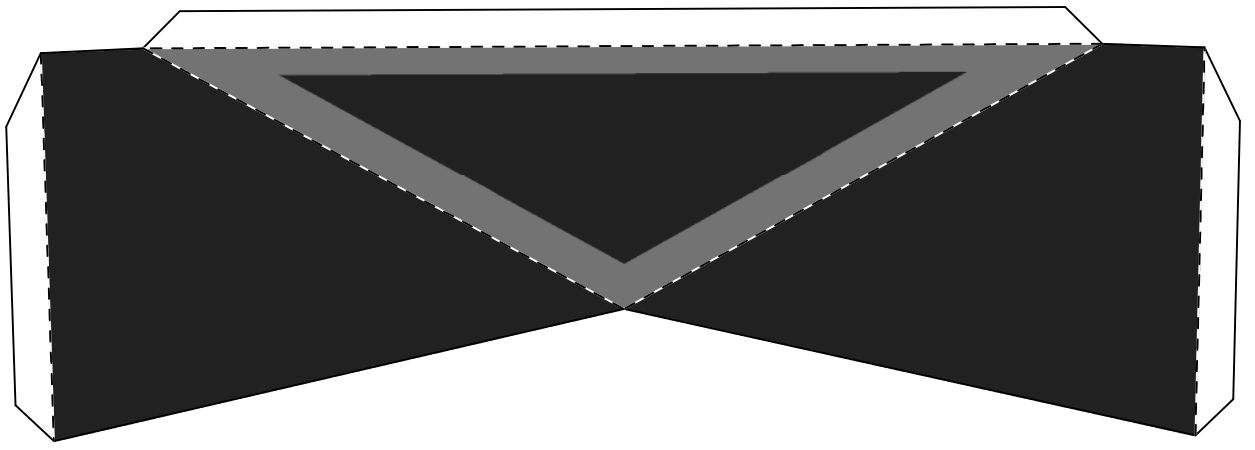


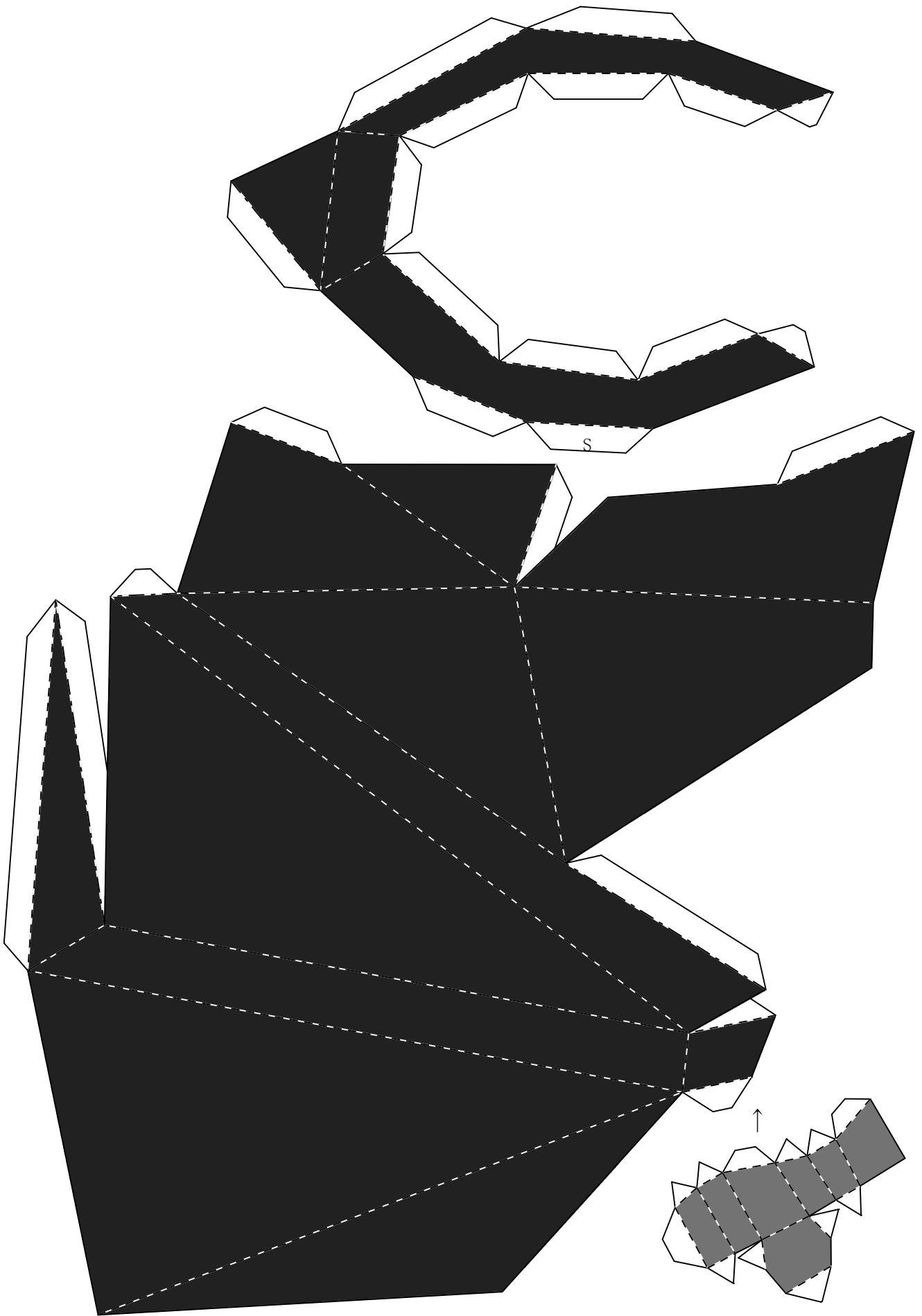




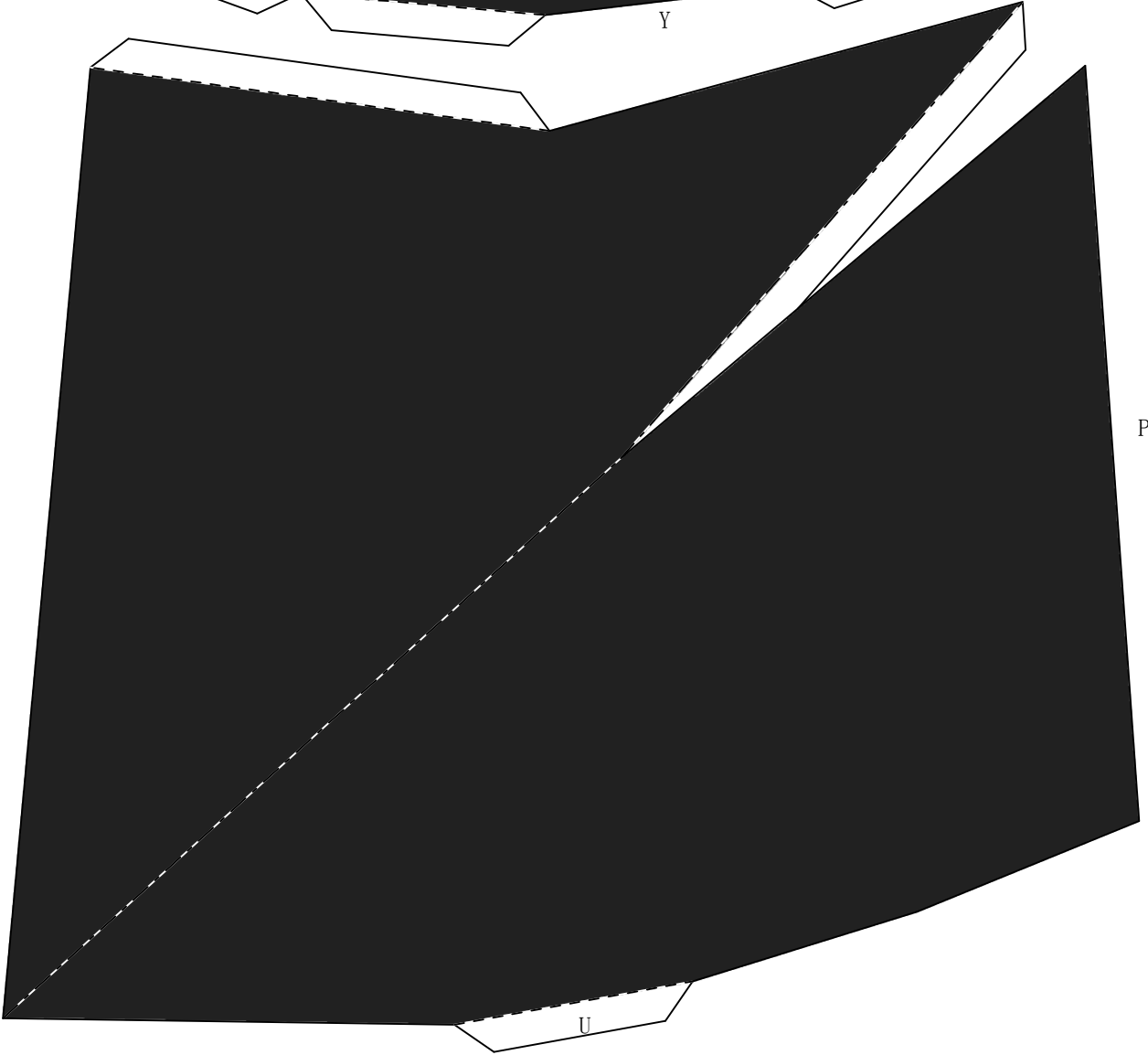
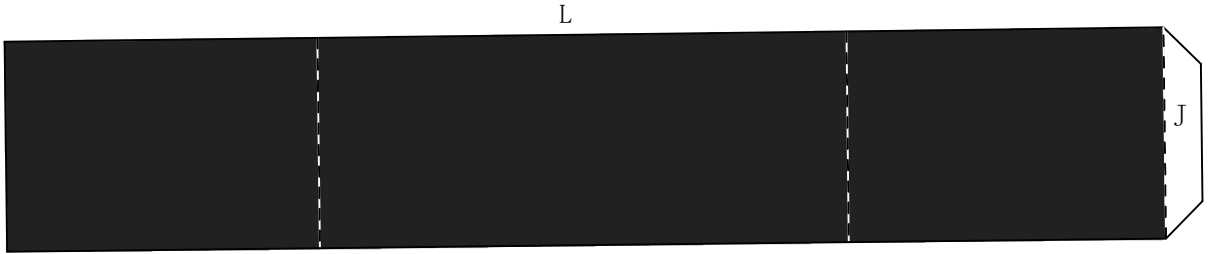
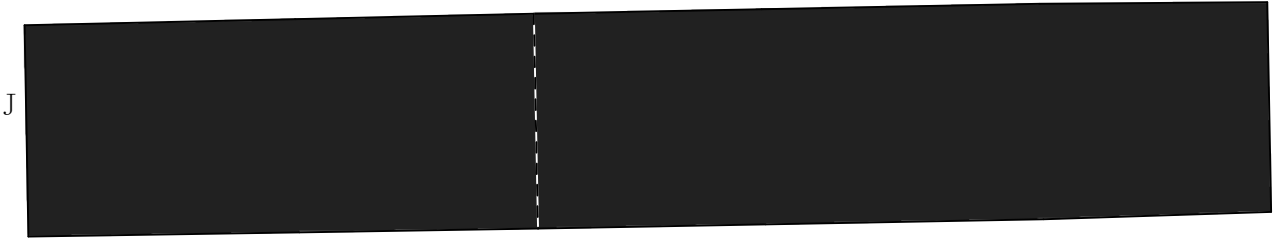


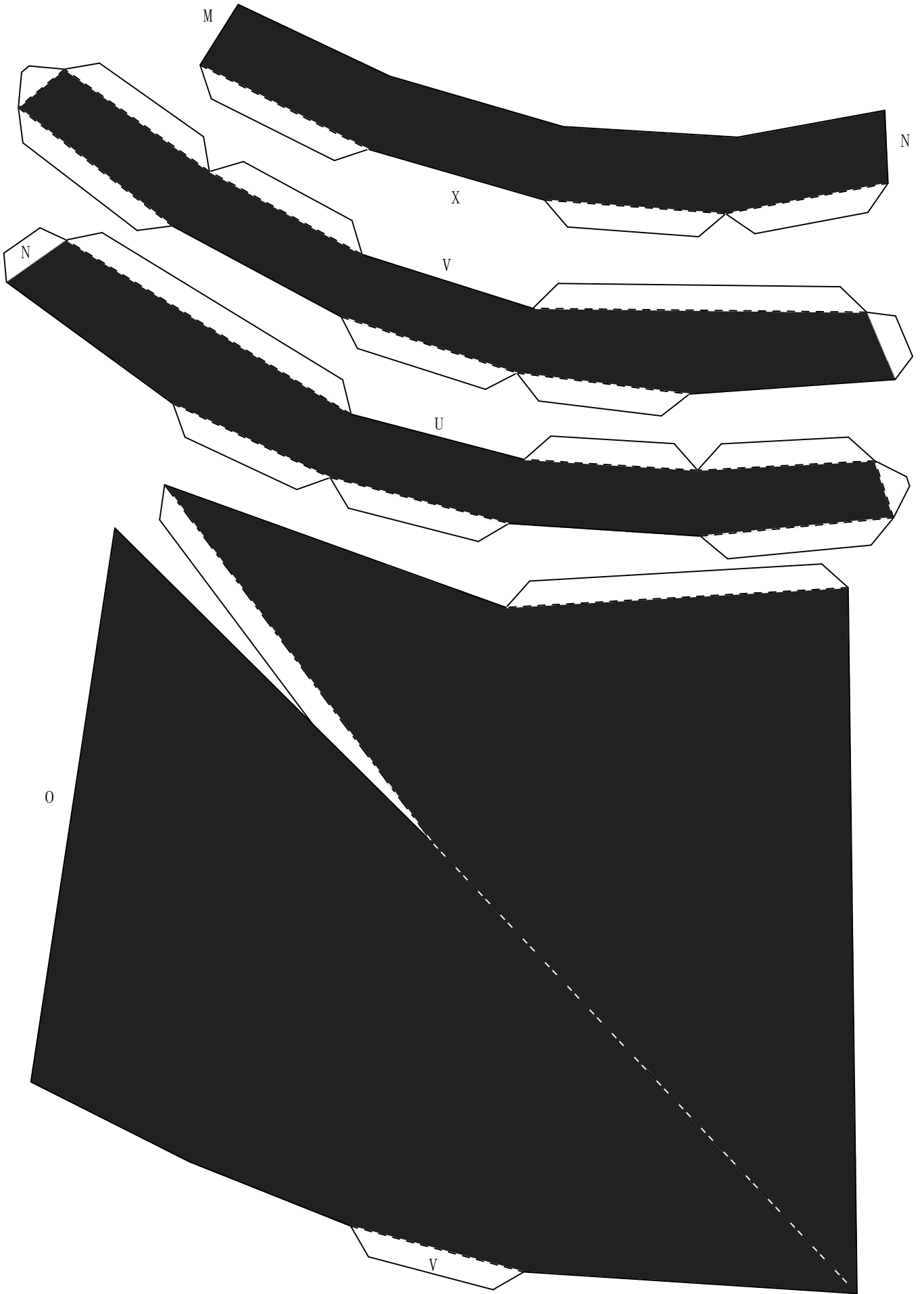












ガラスの形状を型紙にして周囲を 1cm 程度大きく  
カットして下さい。硬い素材を使う場合は適宜折線  
を入れてください。  
車窓用のUVカット（シートタイプ）の裏フィルムを  
剥がさずに使ったらとても良かったのでお勧めです。

